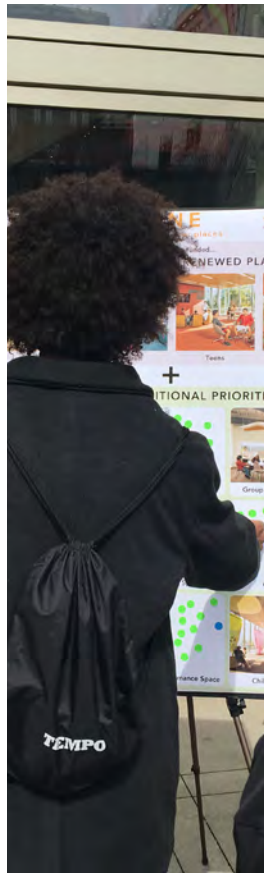


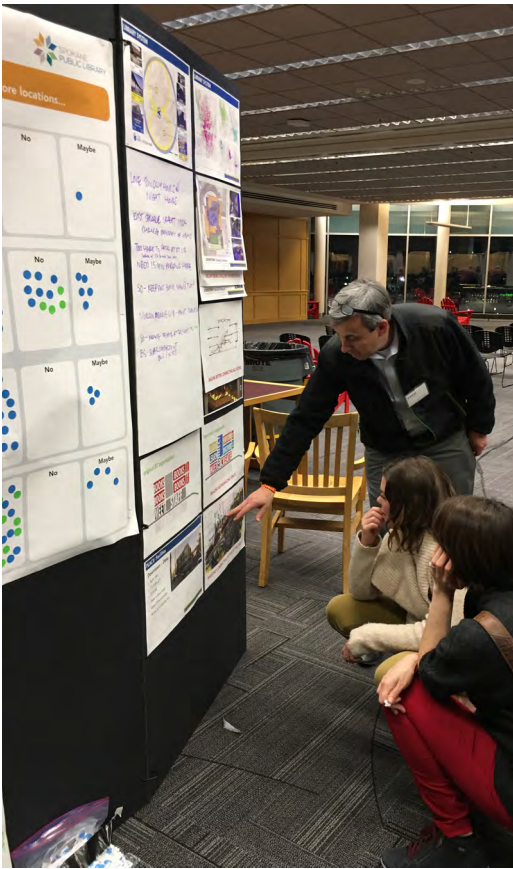


Spokane Public Library Preliminary Design for Six Libraries

DRAFT Report | 17 July 2018



PAGE INTENTIONALLY BLANK



CONTENTS

SUMMARY REPORT

Letter of Endorsement from the Advisory Committee	v
Executive Summary	1
Methodology	3
Technical Assessment	8
Service + Space Best Practices	9
Expanding Capacity	12
Overview of Suggested Projects	13
Library Summaries	
Downtown	14
New East Central @ Libby Center	19
Shadle	20
Indian Trail	22
Hillyard	24
South Hill	26
East Side	28
Next Steps	29



Conceptual furnishing and interiors for Downtown third floor



Conceptual Hillyard makeover looking to permeable wall into program room



Conceptual rendering of Shadle expansion

July 17, 2017

Spokane Public Library Board of Trustees
906 West Main Avenue
Spokane, WA 99201


To the honorable Library Board of Trustees, Mayor, and City Council,

The Spokane Public Library Advisory Committee has collaborated with library staff and consultants to develop the project recommendations and preliminary designs for the citywide library improvements described in this summary report. We have served as a sounding board to help refine and enhance the proposed projects. During the past six months the library has conducted extensive community and stakeholder input which the Advisory Committee has reviewed and enhanced. Through this effort, the following five principles have emerged as the foundation of these improvement projects:

- **EDUCATION** – these projects will connect our community with education, information, and programming.
- **DIVERSITY** – these designs will reflect and celebrate Spokane’s diverse communities.
- **INNOVATION** – in addition to providing the best of traditional library services, the renewed libraries will support next-generation library opportunities.
- **CUSTOMER EXPERIENCE** – all libraries will be places of delight where customers receive individualized service.
- **ACCOUNTABILITY** – these projects will use public funds responsibly and maximize the public’s return on investment.

Today’s libraries are the legacy of a past generation’s investment in their future, and the time has come for us to reinvest in the renewal of our libraries so they remain the vital places of learning and community for generations to come.

It is with great pleasure that we members of the Spokane Public Library Advisory Committee express our endorsement and support of the Preliminary Design recommendations of this plan and further recommend that the Board and Council act on putting a funding measure before the community that could realize the full scope of improvements.




INDIAN TRAIL
Neighborhood Library
Makeover
Today's Size: 10,600 SF



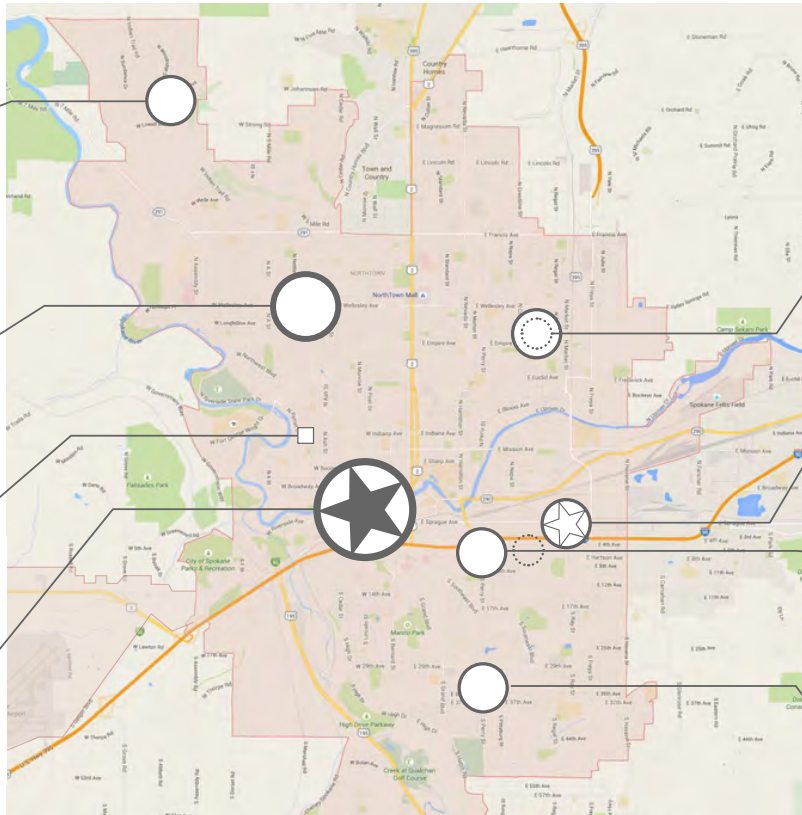
SHADLE
North Community Library
Expansion @ Same Site
Today's Size: 17,800 SF




WEST CENTRAL
24/7 LIBRARY
KIOSK
300 item capacity
Opened July 2018



DOWNTOWN
Citywide Hub
Makeover + Recapture
Today's Size: 117,000 SF




OUTREACH
VAN



HILLYARD
Neighborhood Library
Makeover -or-
Expansion @ Shaw MS
Today's Size: 8,200 SF

Additional East Central
@Libby Center
Future Size: TBD



EAST SIDE
Neighborhood Library
Expansion @ Liberty Park
Today's Size: 6,300 SF



SOUTH HILL
Neighborhood/Community Library
Makeover
Today's Size: 15,000 SF



SUGGESTED PROJECTS

Subject to funding



EXECUTIVE SUMMARY

This document summarizes the proposed Preliminary Designs for improvements to all Spokane Public Library facilities as we begin to plan for the Library of the Future.

The 1990 passage of a bond issue allowed for the construction of the Library's six current facilities. Projects opened between 1992 (Downtown) and 1998 (Indian Trail), totaling nearly 175,000 square feet of space throughout town to serve a city population of 185,000. Today the library serves a population of more than 215,000 in facilities that will soon be in continuous use for three decades.

SPL has recently been making strategic upgrades and improvements where possible within the limited financial resources available for capital projects, but is seeking a way to obtain the funding necessary to fully address the significant capital project needs, and respond to changes in the community and changes in the delivery of contemporary library services.

In 2015, the library began a process of planning the future of their facilities. The Library Board of Trustees approved the 2016 Facilities and Future Service Plan that made recommendations to expand, transform, relocate, or "recapture" public space systemwide.

In 2017, the Board directed the Library to move forward with the next step in facilities improvements. In late 2017, the Library hired a design team to develop preliminary designs and project budgets for improvements. This Preliminary Design project refined Plan recommendations into detailed project scopes and project budgets that will become the basis for seeking new funding in a bond election in November 2018.

SUMMARY OF RECOMMENDATIONS

Location	Current Size (SF)	Type of Improvement
Downtown	117,000	Makeover + Recapture
Shadle	17,800	Expansion @ same site
South Hill	15,000	Makeover
Indian Trail	10,600	Makeover
Hillyard	8,200	Makeover
or Hillyard		Expansion @ Shaw MS
East Side	6,300	Expansion @ Liberty Park
East Central @ Libby Center	N/A	New location and facility
TOTAL	174,900	

**Hillyard Library includes alternative concepts depending on level of collaboration with Spokane Public Schools.*

Spokane Public Library delivers high quality education for all – opportunities to read, learn, and discover the world.

– SPL Mission

We value:

- *Free and open access to education and information*
- *A culture that fosters creativity and innovation*
- *Teamwork and collaboration*
- *The diverse nature of our community*
- *Responsible stewardship of public funds*

– SPL Strategic Directions

ABOUT SPOKANE PUBLIC LIBRARY

The Spokane Public Library serves a municipal population of approx. 215,000 and surrounding communities in the heart of the Inland Northwest region of eastern Washington. Six library facilities are complemented by an outreach van, 24-hour “virtual branch” and a 24-hour materials vending kiosk. The library’s mission is to deliver “high quality education for all – opportunities to read, learn, and discover the world.” The library aims to accomplish this by empowering citizens to help the community succeed, build partnerships to increase community impact, and perform as an organization of growth and innovation.

2015-2016 FACILITIES AND FUTURE SERVICE PLAN

The Facilities and Future Service Plan (FFSP) evaluated the library as an integrated system and individually at each location to develop facility improvement recommendations that will support the mission and vision of SPL for the next 20 years.

Preliminary condition assessments were conducted at each location, and customer experience (CX) workshops were conducted with a cross section of more than 25 Library staff to explore new service and space opportunities at each location.

Based on the system design and preliminary service and site evaluations, the FFSP identified facility improvement options at different levels of investment.

SCOPE AND PURPOSE OF THE PRELIMINARY DESIGN PROJECT

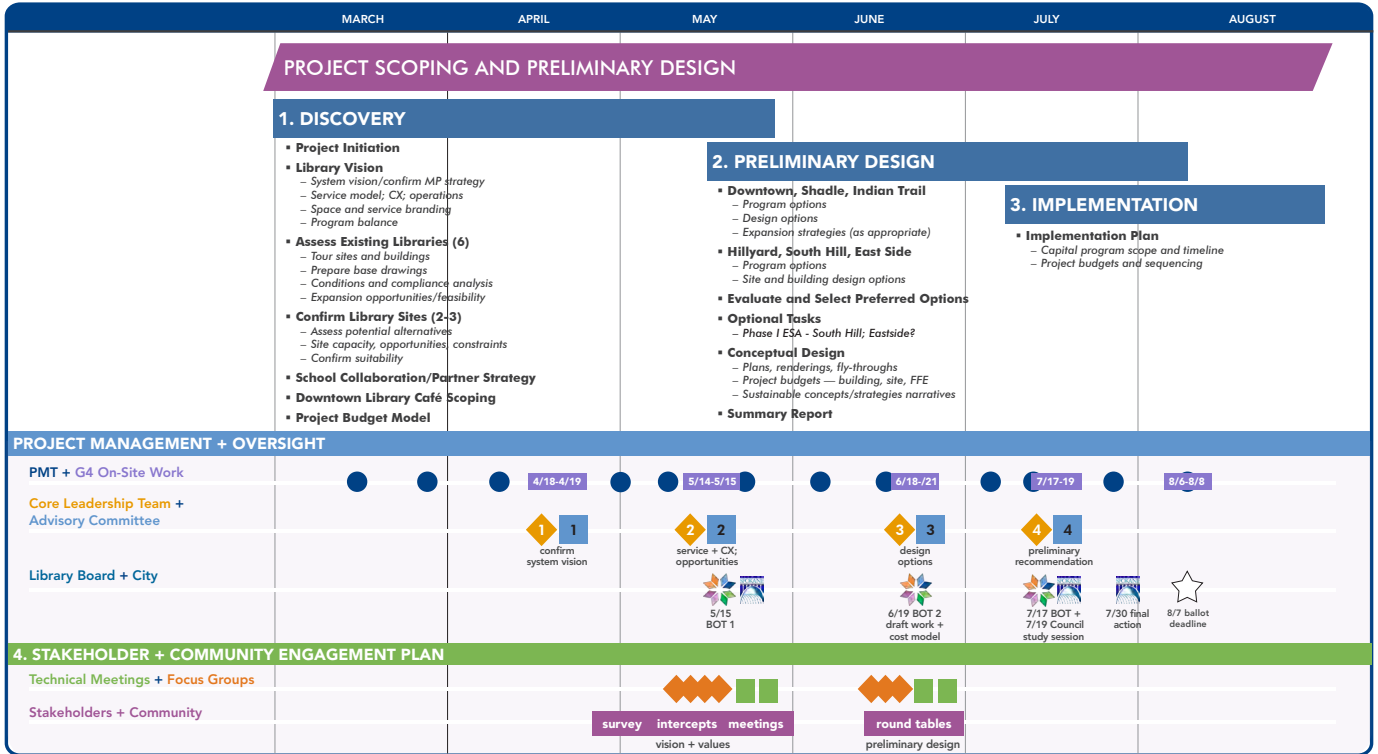
The 2018 Preliminary Design project developed preliminary designs in order to identify more detailed project budgets and inform funding needs. Work included facility assessments, evaluation of prospective new sites, development of outline library programs, conceptual designs of facility makeovers and expansions, and development of project budgets. Extensive community and stakeholder engagement throughout Discovery and Preliminary Design phases confirmed community preferences for facility concepts. Project recommendations and preliminary designs responded to feedback from more than 1,200 community members and stakeholder, advisory committee, and library leadership.



METHODOLOGY

The Library commissioned a design team led by Group 4 Architecture, Research + Planning, based in South San Francisco, CA, and the Spokane, WA, office of Integrus Architects (designers of the existing South Hill Library), with Spokane based subconsultants MW Engineers for mechanical systems assessment, AHBL for landscape and civil engineering design, and Røen Associates for cost consulting.

In close collaboration with Library leadership, a project Advisory Committee, and project stakeholders, the design team crafted systemwide design concepts that permitted flexibility in their implementation – alternatives for sizes, sequence, and cost, as well as specification of facility for specific services, will enable the Library to move forward with a combination of actions that meet available resources and partnerships while still delivering on the vision established by the Facilities and Future Service Plan.



PRELIMINARY DESIGN WORKPLAN

The preliminary design project, including community outreach and Library, Board of Trustees, and Advisory Committee guidance, was carried out over three project phases between March and July 2018.

Discovery Phase

The consultant team confirmed systemwide library vision with SPL, assessed current facility conditions, and confirmed sites for any facility relocations. In this phase it was discovered that: a move of Hillyard Library across the street to Shaw Middle School had healthy community support; a relocation/expansion of East Side Library to Liberty Park met both local community and regional capacity needs; and that Spokane Public Schools expressed interest in exploring a joint use center at their Libby School property on East Sprague. The consultant's café designer identified constraints and opportunities for a Community Block Development Grant funded café space at Downtown Library.

Preliminary Design

From May to July 2018, confirmed project concepts were visually articulated to convey concepts to the general public and establish the level of detail necessary for project budgeting. This report summarizing the Preliminary Design phase findings will be presented to the Library Board of Trustees and City Council.

Implementation

As part of the Implementation Plan, the consultants will work with SPL to confirm project budgets and possible project sequencing. This information will inform and reinforce subsequent efforts to secure funding for later project design phases and construction.

Project Management+Oversight

The consultants met regularly with project stakeholder groups, conduct broad community outreach, track project progress, and confirm project direction.

ENGAGEMENT

Community engagement occurred throughout the Discovery and Preliminary Design phases of this project. Engagement attempted to reach a broad swath of the Spokane community, both in-person and online, through a combination of community meetings, online survey, targeted “intercepts” held at popular pedestrian destinations across town, and informational kiosks at each library location. These efforts resulted in over 1,200 points of community feedback.

The initial round of community engagement consisted of **Open Houses** and **Town Halls** at each branch, along with 23 separate **community intercepts**, and an **online survey**. This round of engagement solicited feedback on two topics: priorities for new library spaces; and support for expansion concepts at four different locations. Participants were asked to place four dots according to their strongest preferences, with opportunity to leave feedback on their decisions and other suggestions. Results are detailed on the following pages.

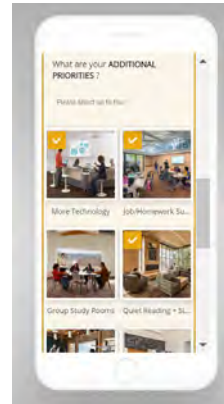
As part of tallying engagement results, preferences were then broken down by demographic and geographic factors, with special attention paid to differences between north and south sides of Spokane, divided as they are by the Spokane River, railroad infrastructure, and Interstate 90.

The Preliminary Design phase responded to feedback collected in the Discovery phase, including the confirmation of appropriate expansions and properties of relocation for specific facilities.

A second round of outreach was built around **roundtable discussions** to confirm conceptual design direction. Roundtables were held at each library branch, focusing on the design decisions for that location, but also discussing the changes systemwide, providing context around the proposed municipal library ecosystem.

An **Advisory Committee (AC)** of local business, nonprofit, and education leaders convened regularly over the course of the project to provide feedback on preliminary design direction. The AC advanced concepts established in the FFSP stakeholder summits. Dozens of Spokane organizations and community leaders have shaped the Library’s ambitions to date – and promise to continue to do so into the future. Project participants from 2015-2018 are listed on the following pages.

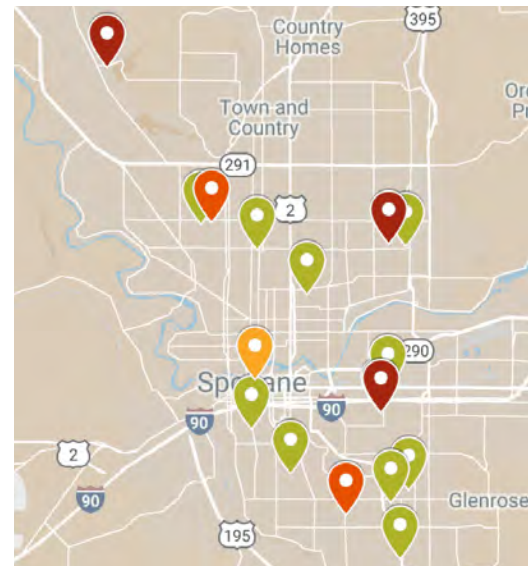
Project progress was reported back to the **Library Board of Trustees** over two consecutive months.



Mobile device responsive online survey



Community intercept session at Rocket Market



Outreach locations. Red/orange = library location; green = community intercepts



Roundtable discussion at Shadle Library

PARTICIPATING STAKEHOLDERS (2015-2018)**Board of Trustees (2018)**

- Jim Kershner, Chair
- Mary Starkey, Vice Chair
- Nathan G. Smith
- Lara Hemingway
- Casey Linane-Booey IV
- Kate Burke, Council Liaison
- Andrew Chanse, Library Director

Preliminary Design Project Advisory Committee (2018)

- Kris Dinnison, Author and Small Business Owner
- Tara Dowd, Executive Director, United Way Excelerate
- Michael Ebinger, Director, WSU University Center for Innovation
- Kim Ferraro, Director, West Central Community Center
- Melissa Francis, West Central Community Center
- Freda Gandy, Director, MLK Family Outreach Center
- Nicolle Hansen, Loan and IDA Specialist, SNAP Financial Access
- Candy Jackson, Health Educator, NATIVE Project
- Melissa Huggins, Director, Spokane Arts
- Patrick Jones, Executive Director, Eastern Washington University Institute for Public Policy & Economic Analysis
- Jake Krummel, Business Development Manager, Numerica Credit Union
- Susan Lane, Executive Director, Chase Youth Commission
- Judge Mary C. Logan, Spokane County Municipal Courts
- Brooke Matson, Executive Director, Spark Central
- Rowena Pineda, Spokane Regional Health District
- Steve Tammaro, President/CEO, YMCA of the Inland Northwest
- Kristin Whitaker, Director, Spokane Public Schools
- Lisa White, Director of After School Programs, Spokane Public Schools
- Sandy Williams, Editor, The Black Lens

Facilities + Future Service Plan Stakeholder Summit Participants (2015-2016)

- Jeanne Ager, Ager Consulting Co.
- Ryan Arnold, Greater Spokane, Inc.
- Anne Marie Axworthy, Greater Spokane, Inc.
- Jeffrey Bell, Gallatin Public Affairs
- Barbara Brazington, EWGS – Eastern Washington Genealogical Society
- Kate Burke, Washington State Senator Andy Billig
- Thom Caraway, Whitworth University
- Ben Cabildo, Community-Minded Enterprises
- Kim Cederholm, Rockwood Retirement Community, South Hill
- Kris Dinnison, Atticus Coffee House
- Michael Ebinger, Washington State University
- Charles Hansen, Spokane Neighborhood Council, Whitman
- Michele Hege, Desautel Hege
- Eric Finch, City of Spokane
- Charles Hansen, Spokane Neighborhood Services
- Legislative Assistant Maureen Gaeger, Office of State Representative Marcus Riccelli
- Janet Gullickson, Spokane Falls Community College
- Sandra Kernerman, KSPS
- Brenda Kochis, Friends of Spokane Public Library

- Jim Kolva, Northwest Room user
- Phil Lindsey, Mobius Science Center
- Judge Mary Logan, Spokane Municipal Court
- Ed Lukas, City of Spokane
- Amy McGreevy, Excelerate Success
- Jessica Mortensen, Reach Out and Read Washington State
- Councilwoman Candace Mumm, Spokane City Council
- Jack Nisbet, Northwest Room user
- Sally Phillips, Community Assembly
- Mark Richard, Downtown Spokane Partnership
- Representative Marcus Riccelli, Washington State House of Representatives
- Forrest Rodgers, Northwest Museum of Arts and Culture
- Nathan Smith, Witherspoon Kelley / SPL Board of Trustees
- Councilman Jon Snyder, Spokane City Council
- Mary Starkey, Global Credit Union / SPL Board of Trustees
- George Suttle, Spokane Falls Community College
- Steve Tammaro, YWCA of Spokane
- Steve Trabun, Avista
- Anne Walter, SPL Board of Trustees
- Dolly Webb, Eastern Washington Genealogical Society
- Lisa White, Spokane Public Schools
- Commissioner Sandy Williams, Washington Commission on African American Affairs
- Christopher Zilar, Inland Northwest Business Alliance



Library Core Leadership Team (2018)

- Andrew Chanse, Executive Director
- Caris O'Malley, Deputy Director
- Alan Wagner, Human Resources Manager
- Sarah Bain, Strategic Partnerships Director
- Cathy Bakken, Reference Librarian at Downtown
- Rae-Lynn Barden, Admin. Services Coordinator
- Jeff Benefield, Reference Librarian at Shadle
- Patricia Bonner, North Region Community Engagement Manager
- Penny Brown, Business & Finance Director
- Sally Chilson, Learning & Literacy Manager
- Amanda Donovan, Communications Manager
- Corey Fitch, Facilities & Maintenance Manager
- Jason Johnson, Downtown Community Engagement Manager
- Tara Neumann, Community Technology Manager
- Ellen Peters, South Region Community Engagement Manager
- Mark Pond, Business Reference Librarian
- Angela Richardson, Indian Trail Customer Experience Manager
- Rob Roose, Support Services Manager
- Andy Rumsey, Music Education Specialist
- Vanessa Strange, Cultural Programming Librarian



TECHNICAL ASSESSMENT

Technical assessments of each facility were led by Integrus (architectural and structural evaluation), with MW Engineers evaluating mechanical/plumbing and electrical building systems, with the aim of identifying each facility’s fitness for renovation and for capital maintenance. Assessment included visual observation, interviews with SPL staff, review of building record drawings, and analysis of building code compliance.

Generally SPL’s facilities are in good condition, but at ages ranging from 20 to 26 years, interior finishes and furnishing are generally worn and in need of replacement. Changes in the building code have led to minor non-compliance with ADA accessibility regulations. Mechanical systems are approaching the end of their service life and are due for replacement (with opportunities to introduce higher efficiency systems). New roofing is required at most branches.

The table below summarizes assessment findings. A full Building Assessments report was compiled for this project and will be shared with the Library and project stakeholders.

	RE-ROOF REQUIRED	INTERIOR FINISHES	ADA ACCESSIBILITY	ELECTRICAL DISTRIBUTION	LIGHTING AND CONTROLS	TELECOMM/TV	FIRE ALARM	SECURITY UPGRADES NEEDED	HVAC SYSTEM	PLUMBING	FIRE PROTECTION	PARKING/ SITE IMPROVEMENTS
DOWNTOWN		X	X		X	X	X	X	X			
SHADLE	X	X	X				X	X				
SOUTH HILL		X	X	X	X		X	X	X			X
INDIAN TRAIL	X	X	X						X			
HILLYARD	X	X	X						X			X
EAST SIDE	X	X	X						X			X

Capital maintenance overview for SPL locations.

“Security upgrades” equate to improved intrusion detection, video surveillance, and access control.



SERVICES + SPACES BEST PRACTICES

The 2016 Facilities and Future Service Plan discusses the many significant changes that library services and spaces have experienced over the past 20 years, and reviews opportunities to utilize leading practices to meet contemporary community needs. Through a process of community engagement and direction from the Library, Library Board of Trustees, and a project Advisory Committee of community, business, and nonprofit leaders, this project has identified five principles through which the proposed future SPL service and space enhancements might be best framed:

- **Education** – SPL endeavors to be the resource for free learning opportunities for all citizens, build networks for sharing knowledge and opportunities, and inspire a community of learners. The enhanced Spokane public libraries will connect the Spokane community with education, information, and programming.
- **Diversity** – SPL strives to tailor services for Spokane’s diverse institutions, organizations, and individuals, and accommodate a wide variety of local needs, aspirations, and identities. These designs will reflect and celebrate Spokane’s diverse communities.
- **Innovation** – To accommodate all Spokane community members, services and spaces must both respond to traditional needs, such as research and reading, and contemporary and emerging “next-generation” resources for collaboration, creation, and digital interaction. In addition to providing the best of traditional library services, the renewed libraries will support next-generation library opportunities.
- **Customer Experience** – The enhanced facilities will play a crucial role in a consistent, clear, and inspiring library experience that equally involves the library’s staff, collections, technology, and virtual space. All libraries will be places of delight where customers receive individualized service. Patrons will feel welcome to utilize and manipulate library spaces to better meet their needs.
- **Accountability** – It is critical that public funds are employed as efficiently as possible to deliver the largest possible impact from finite funding. The enhanced library facilities will use public funds responsibly and maximize the public’s return on investment.

SERVICE + SPACE PRIORITIES – ENGAGEMENT

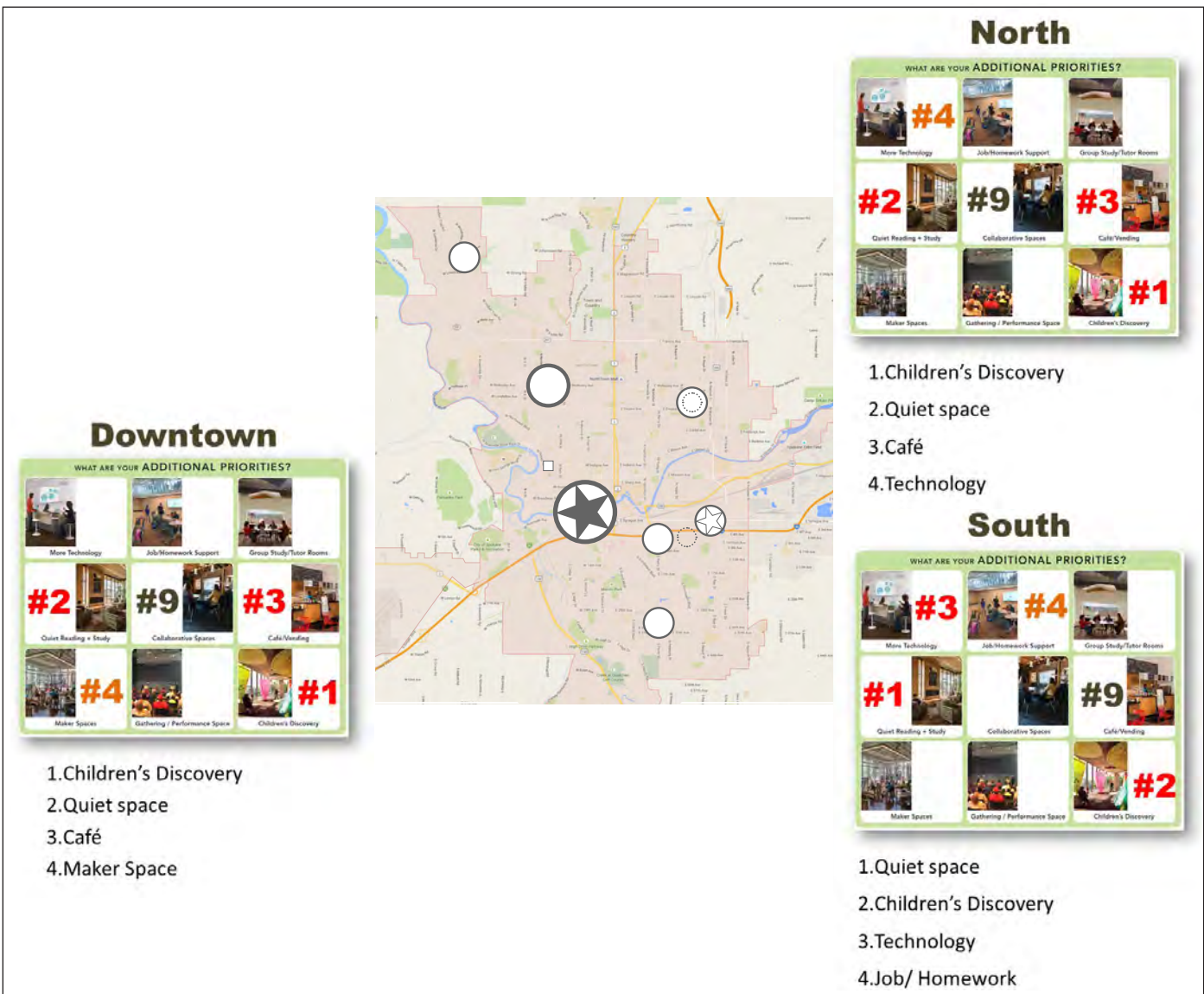
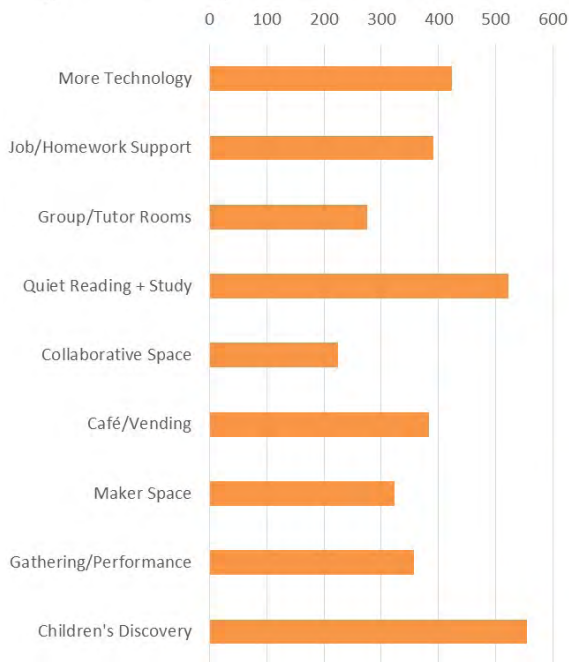
Through project outreach, Spokaneites were asked to identify their priorities for new (or additional) library spaces. Currently, all SPL library locations are planned to renew their collections, children, teens, and adult spaces; participants were asked to vote on four preferences for additions to a “basic” facility makeover. The nine options included:


- **More Technology** – Should the library offer more computer stations or things like check-out laptops, projectors, or WiFi hot spots
- **Job/Homework Support** – Equip classroom environments for tutoring, school support, and job support
- **Group Study Rooms** – Provide a variety of enclosed team/conference/study rooms
- **Quiet Reading + Study** – Provide areas of the library fit for quiet activities, comfortably
- **Collaborative Spaces** – Provide more open, active, large working space including collaboration/ presentation and teleconferencing tools
- **Café/Vending** – Provide an in-house café or vending area that invites patrons to refuel and socialize
- **Maker Spaces** – Provide creative studio space for tinkering, crafting, painting, 3D printing, and other means to collaborate and create
- **Gathering/Performance** – Provide a theater or other venue for events, shows, lectures, and more
- **Children’s Discovery** – Enhance and enlarge the active and engaging elements in the children’s section

About 4,700 votes were cast. Children’s Discovery and Quiet Space ranked highest not only citywide, but for each regional district – North, South, and Downtown. These preferences suggest that current facilities lack sufficient space to accommodate a robust children’s section, but also that Spokane’s libraries are so busy and crowded as to not allow patrons room and acoustic separation to focus on reflective activities.



Citywide priorities







INDIAN TRAIL
Neighborhood Library
Makeover
Today's Size: 10,600 SF



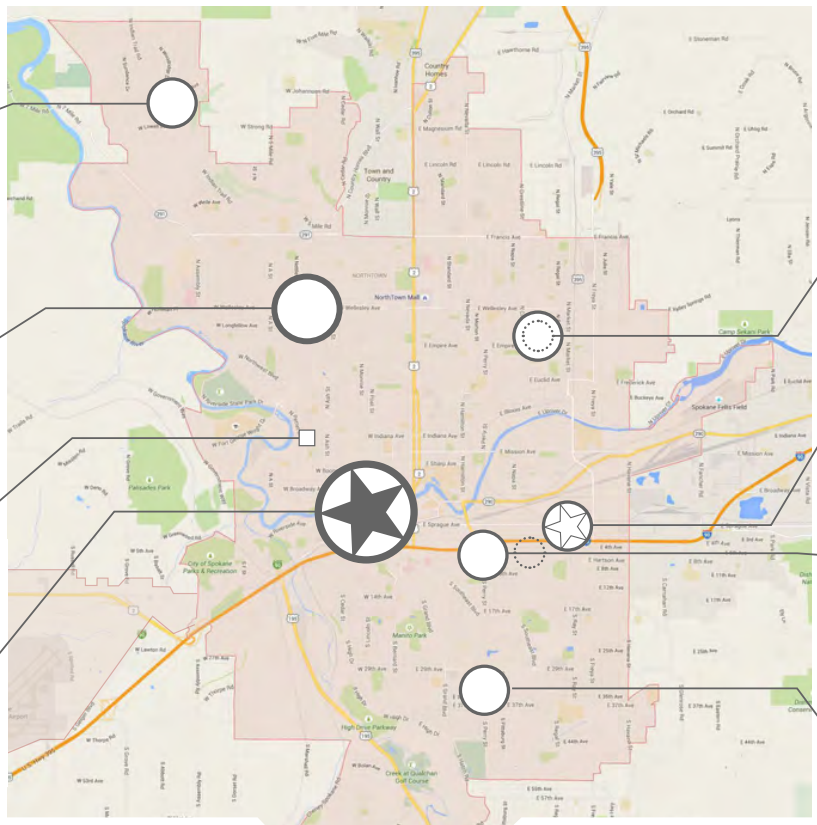
SHADLE
North Community Library
Expansion @ Same Site
Today's Size: 17,800 SF



WEST CENTRAL
24/7 LIBRARY
KIOSK
300 item capacity
Opened July 2018



DOWNTOWN
Citywide Hub
Makeover + Recapture
Today's Size: 117,000 SF




OUTREACH VAN



HILLYARD
Neighborhood Library
Makeover -or-
Expansion @ Shaw MS
Today's Size: 8,200 SF

Additional East Central @Libby Center
Future Size: TBD



EAST SIDE
Neighborhood Library
Expansion @ Liberty Park
Today's Size: 6,300 SF



SOUTH HILL
Neighborhood/Community Library
Makeover
Today's Size: 15,000 SF



SUGGESTED PROJECTS
Subject to funding



JUST IMAGINE
what will make your libraries even greater places

To INCREASE CAPACITY, we are considering expanding one or more locations...

Project	Yes	No	Maybe
SHADLE expanded on its present site?			
SOUTH HILL relocated + expanded at Thornton Murphy Park?			
EAST SIDE relocated + expanded within 1 mile of its current location?			
HILLYARD relocated + expanded at nearby Shaw Middle School site?			



Community feedback on possible expansions and relocations provided valuable guidance that lead to revised project recommendations

OVERVIEW OF SUGGESTED PROJECTS

As noted in the Facilities and Future Service Plan, changes in Spokane's demographics and evolution in the nature of community needs for public libraries since the mid-1990's have necessitated the development of a vision for Spokane Public Library facilities with expanded capacity and forward-thinking spaces and services. These library enhancements will be tailored to specific Spokane community needs, desires, and identity.

Expansion concepts were refined following a period of robust community engagement. Also, Preliminary Design concepts accommodate opportunities that emerged during this project's Discovery phase. Expanded capacity concepts for each facility are outlined below and in greater detail by location on the following pages.

CITYWIDE SERVICES

The **Downtown Library** can be enhanced in its role as citywide flagship and expand its capacity to deliver next-generation library services. Most notably, the facility's first floor could consolidate the back-of-house spaces and recapture space for public use as a Collaborative Commons including spaces for art and music studios, maker spaces, and daylight program rooms to art yards, cafe, and ground floor Level Up space – while creating stronger indoor/outdoor connections to Main Street and Spokane Falls Boulevard.

New citywide program and event spaces are proposed for development with Spokane Public Schools at their **Libby Center** campus. The facility would include conference/training spaces and support spaces, capable of extending citywide next-generation library services. Other complementary library spaces will be provided to support the needs of the redeveloping East Sprague area that is geographically isolated from the rest of east central area by I-90.

NORTH SPOKANE

Shadle Library serves all of north Spokane, as one of the city's larger libraries, but is too small for the approx. 100,000 residents that use it. There is an opportunity to expand Shadle to 30,000 SF at its current location to provide community demanded next-generation library services and spaces. Shadle expansion had the highest level of citywide support with yes votes ~ 10 to 1 compared to no. That ratio of support was generally consistent in north and south ends of town.

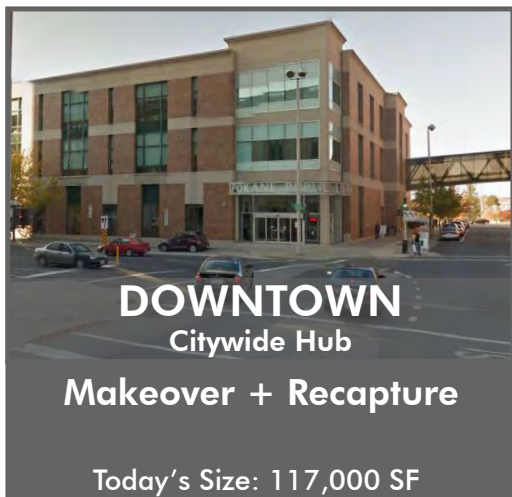
Hillyard Library, one of Spokane's small neighborhood branches, may either undergo a makeover in its current footprint or leverage an opportunity to collaborate with Spokane Public Schools in the form of an expanded, co-located public/school library across the street at Shaw Middle School. In community outreach, the Shaw relocation concept received a high level of citywide support, with a 6 to 1 ratio of Yes to No votes. Like Shadle this level of support was generally similar across the geographic subsets.

Indian Trail Library can meet projected community needs within the footprint of its current facility, by increasing permeability between a marketplace and the program room – thereby creating flex space opportunities for both – and recapturing inefficiently designed space for use as group study rooms.

SOUTH SPOKANE

As a hub for the city's south side, **South Hill Library** is about half the size it needs to be, however an expansion (with parking) cannot fit at the library's current location. The community outreach phase found significant opposition to a possible relocation, therefore the recommendation for South Hill is to remain at its current location and receive a makeover. It is anticipated that some of the other library expansions will reduce some of the crowding and pressure on a renovated South Hill.

The **East Side Library** is currently the smallest branch in the city, serving primarily those who live near it. Community input clearly stated a desire to keep the library south of I-90 and relocation to nearby Liberty Park received positive support. The community's openness to a relocation and expansion of East Side depends on the precise location proposed – at a quarter mile west while still south of I-90, Liberty Park is a viable new location for the East Side Library.



Current conditions



Original vs. Reimagined Downtown space allocation

DOWNTOWN LIBRARY

Spokane’s main library, the three story, 117,000 square foot Downtown Library (906 W. Main Ave.), has experienced a significant shift in use since it opened twenty-four years ago. As public library use changes generally (placing emphasis on a broader variety of learning and literacy methods), and as downtown Spokane becomes an increasingly attractive destination, SPL considers Downtown as a citywide hub of next-generation library services, and reflect its central place within the Spokane community.

Since the 2016 release of the Facilities and Future Service Plan, the Library has undertaken several smaller projects to introduce new spaces at Downtown, notably on the third floor with the replacement of carpeting, relocation of stacks to second floor (along with introduction of a floating collection policy), launch of the Level Up center – a coworking, high-tech learning, and conference space – and the Community Lens performance space and stage overlooking Spokane Falls and the river’s north bank.

However much of the rest of the building remains unchanged since its original mid-90’s format. The facility itself is generally well maintained, but includes original mechanical systems approaching end of life. Most notably, the first floor – apart from the gallery and community rooms along Main Avenue – is dedicated to back-of-house functions.

A reimagined Downtown Library would create a vast range of opportunities for public use, from the first floor up. Key “storefront” spaces facing downtown streets and riverside plazas can be transformed into public spaces ranging from maker spaces and creation labs to a dedicated music studio and relocated Level Up center, program rooms, art studio, gallery, and café with stronger indoor-outdoor connections. These spaces would be connected by a open Collaboration Commons, connecting the existing entrance and stairway to a second entrance, art yard, and pedestrian plaza facing Spokane Falls Boulevard and new street level plaza. Staff spaces would be consolidated and rearranged for efficiency, while other back-of-house functions would move off site.

Controlled spaces for library materials would still begin at the second floor, where a robust marketplace would extend the retail experience of River Park Square Mall across the skywalk. A vibrant Children’s Discovery space would overlook the new riverfront plaza. Group meeting spaces can be incorporated along the east and west walls of the second and third floors, maintaining openness and sight lines from staff perches.

Apart from additional group study rooms, the third floor would embrace the changes already made by SPL. The relocation of Level Up to the first floor would create more area for the Adult / Teen collection and reading space.

An option for the vertical connection between the second and third floors would be the construction of a **social stair** including a broad, gradual ascent adjoined by stadium-style lounging and furnishing. New openings would be made in the building’s floor to strengthen connectivity, accommodate the social stair, and introduce a new public stair between floors 1 and 2.



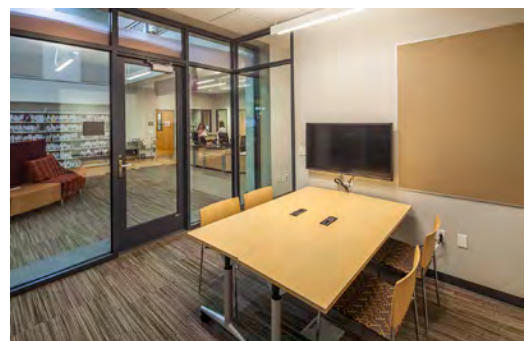
Concept: Social spaces



Concept: Diverse furniture for Adult+Teen spaces



Concept: Maker/Arts/Partner Space (M.A.P.S.)



Concept: Group study rooms



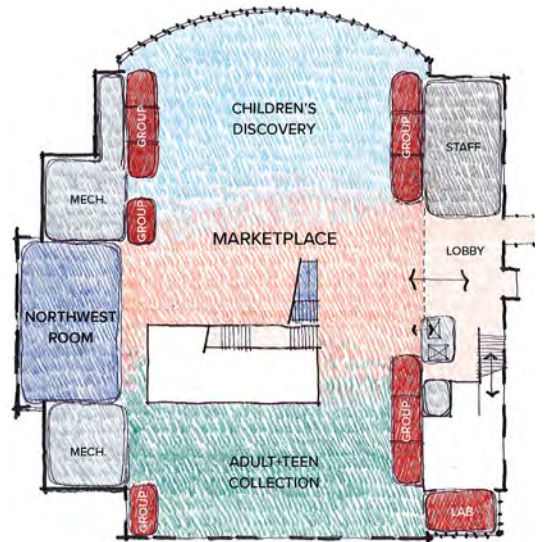
Downtown – Current First Floor space allocation



First Floor concepts for “recapturing” public space



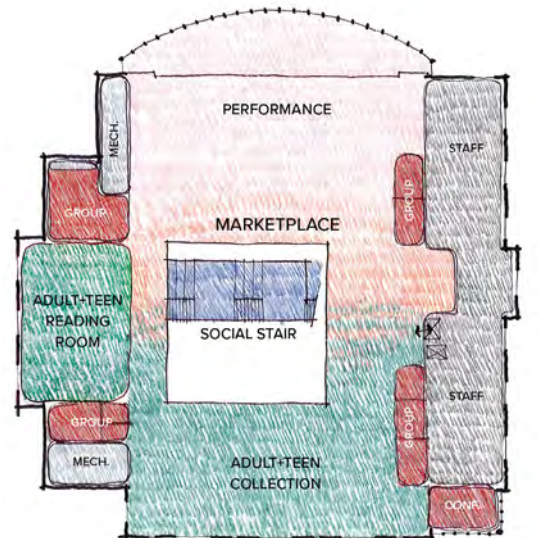
Current Second Floor space allocation



Second Floor concepts



Current Third Floor space allocation



Third Floor concepts



Collaborative Commons concept



Children's Discovery concept (second floor)



Social stair concept (third floor)



Spokane Falls Boulevard – Potential street closure for festivals



Plaza – Potential shaded Community Hall courtyard



West Main Avenue - Improved frontage and connections



Downtown site opportunities

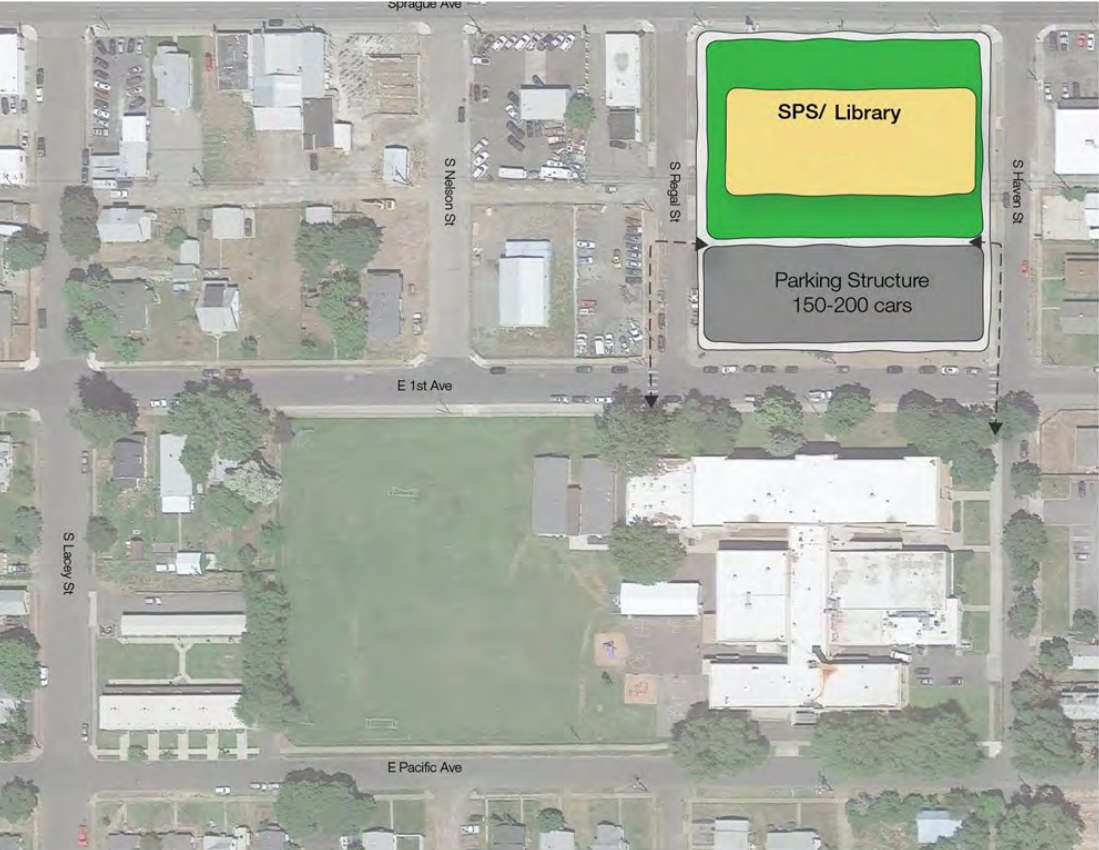


Conceptual interaction between Downtown Library and in-development CSO plaza overlooking Spokane Falls



NEW EAST CENTRAL @ LIBBY CENTER

An additional opportunity to collaborate with Spokane Public Schools District emerged in the East Sprague Avenue district, at the Libby Center campus (2900 E. First Ave.). Currently, Libby Center offers programs for gifted students and staff development. SPS had intentions to develop a multipurpose teacher training facility on a vacant part of the campus, on the southwest corner of E. Sprague and S. Haven. The Library is exploring an opportunity to complement a new training facility with spaces and services to present an interactive events center and a location for next-generation public library services for East Central and Southern Spokane.





SHADLE LIBRARY

At 17,800 square feet, the Shadle Library (2111 W. Wellesley Ave.) is undersized for its role serving as a destination library for the north side of Spokane. The site surrounding the library is property of Spokane Parks and Recreation, and granted by agreement to host the library. There is sufficient space immediately surrounding Shadle Library to accommodate an expansion to double Shadle’s size and meet the identified level of demand for additional and next-generation library spaces and services.



Through later rounds of engagement including a community round table and Advisory Committee meetings, the “lens” expansion scheme was favored. This scheme relocates the library entrance to a tall atrium, lined with clerestory windows and opening simultaneously towards the Aquatics Center and the Shadle shopping center across North Belt Street. An expanded program room and generous children’s zone, along with restrooms and storage, would be located on the opposite side of the lens-atrium, facing Shadle Park. The original building would be preserved, but would include new interior spaces including meetings rooms, Maker/Arts/Partner rooms, and a lobby and café. A 1,000 SF expansion towards the intersection of Wellesley and Belt would increase the presence of Shadle Library along the Wellesley thoroughfare, and accommodate additional Adult/Teen collection space and reading space.

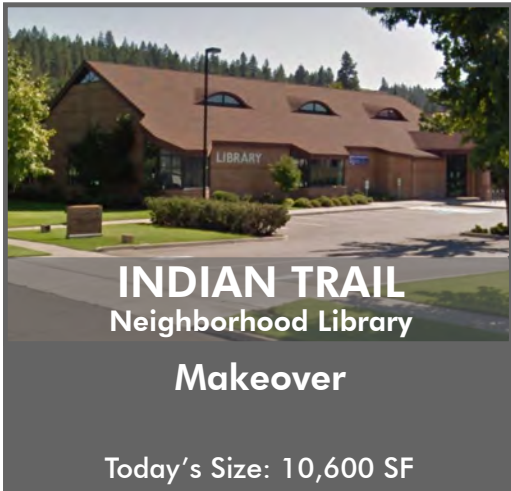
There is also an opportunity to include a drive up book drop incorporated with the library building’s staff space.



Shadle – Existing conditions



"Lens" expansion concept. The dashed line indicates Shadle's current footprint.



INDIAN TRAIL

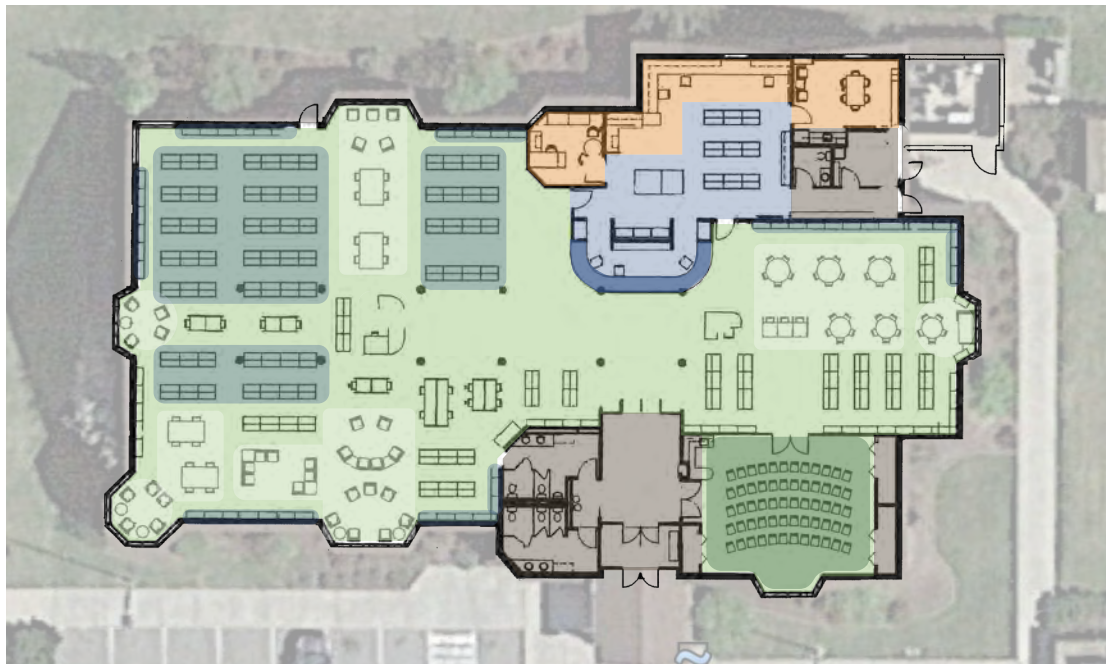
Completed in 1998, Indian Trail Library (4909 W. Barnes Rd.) is the youngest facility in SPL’s system. The majority of exterior and grounds are well maintained and in very good condition; however, the roof is due for replacement, and some mechanical equipment is at the end of its service life. Public and staff spaces are outdated, and finishes are fit for a refreshment. The facility’s exterior book drop should be incorporated into the building.



The 10,600SF facility is due to undergo a makeover, refreshing building systems, finishes, and furnishings. A renewed Indian Trail library should incorporate group study rooms, and create a more permeable and flexible entrance to the program room, allowing the room to serve as overflow space for the library, and vice versa. Opportunities also exist to develop an outdoor courtyard or educational garden with a strong connection to a revitalized Children’s Discovery area. With the migration of staff desk to a centralized perch in the marketplace, some back-of-house space could be “recaptured” for an additional group study room.



The library’s site includes plenty of space available for expansion if needed. Given the area’s growth, this concept may be considered at a future date.



Indian Trail – existing conditions



Indian Trail – proposed makeover



HILLYARD

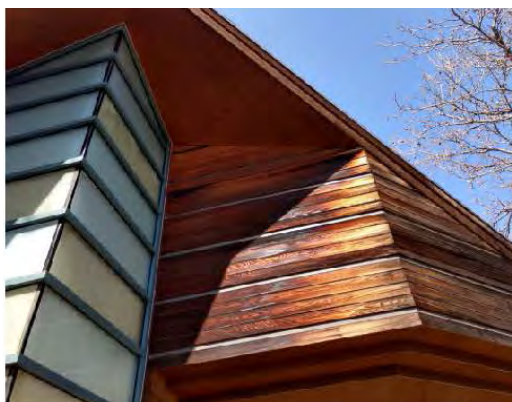
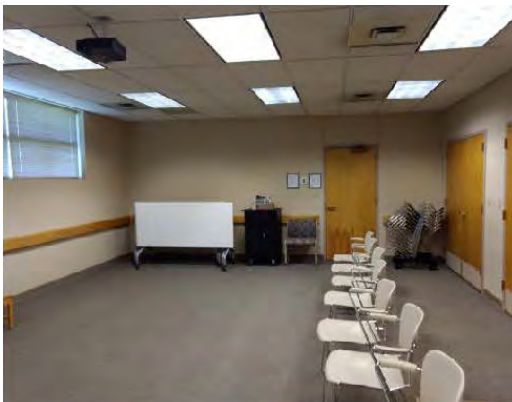
The 8,200 SF Hillyard Library (4005 N. Cook St.) is a small and awkward facility, due in part to its diamond orientation and inefficient double-sided entrance from one of its corners. Some mechanical equipment is at the end of its service life and should be scheduled for replacement. Hillyard’s staff room is extremely small, and offers few opportunities for recapture. The parking lot is small and challenging, and the site is insufficient for an effective expansion.

Many opportunities exist to make-over Hillyard library, reorganize the interiors and unlock public space within the current footprint. One such strategy is creating a more permeable barrier between the (enlarged) program room and the library, as to create overflow or swing spaces during periods of heavy use.

Opportunities also exist to create an outdoor patio on the southwest side of the building – this location would be within sight of the bust stop on Cook St., and be protected from noise of the community center playground. Such a patio could effectively enlarge library space in periods of good weather.

SHAW MIDDLE SCHOOL

An opportunity has presented itself for the Library to collaborate with Spokane Public Schools in developing an expanded, joint public/school library located across the street at Shaw Middle School. Over the course of this project, the Library, School, and design team have discussed strategies and precedents for ensuring access by public and students, while both communities benefit from expanded service offerings. The community outreach process found strong support for this concept. Should it proceed, Hillyard would move into a new building.



Hillyard – existing conditions



Existing program



Proposed Makeover



Hillyard makeover concept



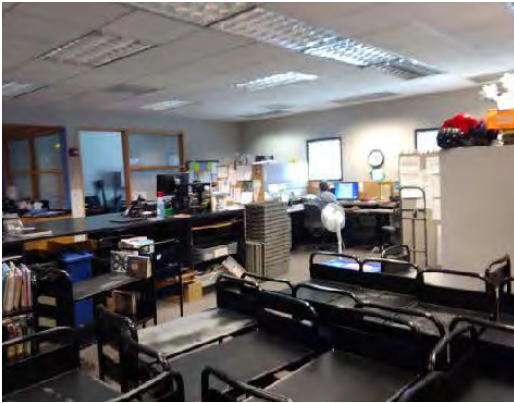
Relocation to Shaw Middle School concept



SOUTH HILL LIBRARY

At 15,000 SF, the popular South Hill Library (3324 S. Perry St.) operates at-capacity, with a large collection and the highest circulation in the city. The building is in good condition and has recently been reroofed, however some mechanical equipment is at the end of its service life. The library's site has no capacity for future expansion. Parking is insufficient for the number of library users.

The project concept responded to strong community interest to preserve the South Hill Library location, building, and size, and undergo a "makeover" to renew building systems, finishes, and furnishings, create flexible connections to the program room (allowing either space to serve as overflow during heaviest use of its neighbor) and introduce group study rooms into the existing floorplan. There is also the potential to introduce a drive up aisle and incorporate a book drop into the staff area of the library building.



South Hill – existing conditions



Proposed makeover



EAST SIDE LIBRARY

At 6,300 SF, East Side Library (524 S. Stone St.) is the smallest branch of Spokane Public Library. The library has very little space to accommodate a collection, computers, and reading seats. The building has no space available for recapture, and its site has no space for expansion. The parking lot, shared with the adjacent East Central Community Center, is frequently full.

During the project's Discovery phase, the Library and design team entertained several options for relocating East Side to a nearby site with capacity to accommodate a more than doubled-in-size facility. Responding to strong community feedback, locations north of Interstate 90 were ruled out. There was, however, considerable support for locating a new East Side Library at Liberty Park, within 1 mile of the current East Side Library. A site option on the east edge of the park presents opportunities for co-location with the Liberty Aquatic Center and would bring the new library even closer to its previous location – a distance of a half mile.



East Side – Existing Conditions



East Side – Existing Plan



Proximity to conceptual site in Liberty Park



NEXT STEPS

This report is intended for review by the Library Board of Trustees and City Council, for approval by those bodies.

A budget for project improvements will also be presented to the LBOT for confirmation, concurrently with the presentation of this report.



GROUP 4

ARCHITECTURE
RESEARCH +
PLANNING, INC

WWW.G4ARCH.COM

integrus
ARCHITECTURE

www.integrusarch.com

